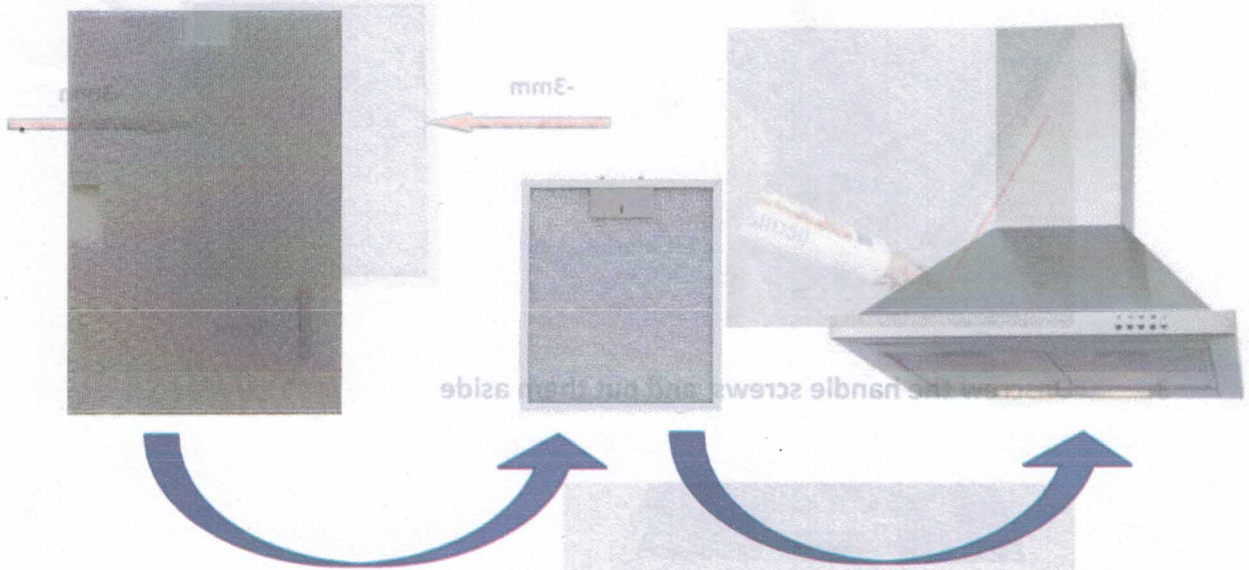


# UNIVERSAL REPLACEMENT FILTER MATS FOR COOKER HOODS



Replace easily just the inside filter mat for your used or defected filter

This Replacement mat can just be used for filters with **U-Profile** aluminium frame. Please make sure that the filter frame is screwed. Riveted filter frames cannot be used.

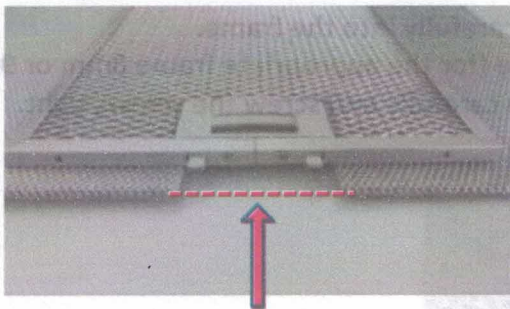
## Requirements:

Scissors, Permanent marker, Screwdriver, Stapler, Safety glasses, Working gloves.



## Steps:

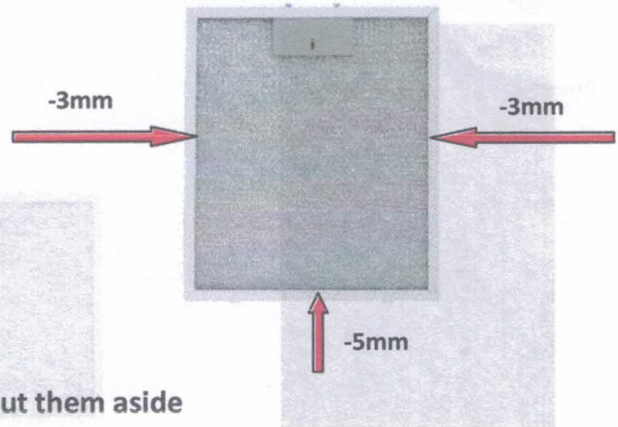
1. Adjust the filter and bring it forward to the dashed line (top edge of the filter)



2.

Place the cutted new filter mat into the frame. Insert one of the included handle screws into the cutted area. Close the frame.

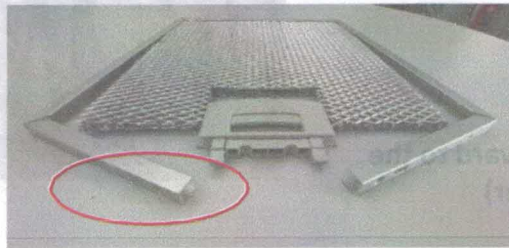
2. Mark the filter size on the new expanded metal layer.  
Filter size = Frame size minus 3 mm for the longitudinally side and minus 5 mm for the opposite handle side



3. Unscrew the handle screws and put them aside



4. Spread the frame carefully (not more than the width of the handle), to avoid breaking the edges. Pull out the old filter mat carefully and place the handle aside



5. Place the cutted new filter mat carefully into the frame.  
Insert one of the included handle (for the appropriate frame 8mm or 9mm) into the cutted area. Close the frame carefully and screw the screws tight.

